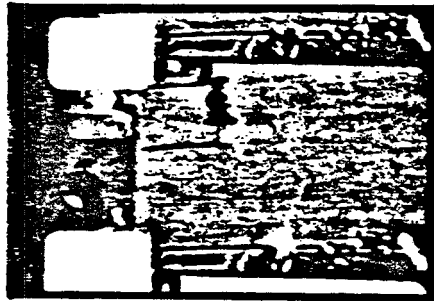


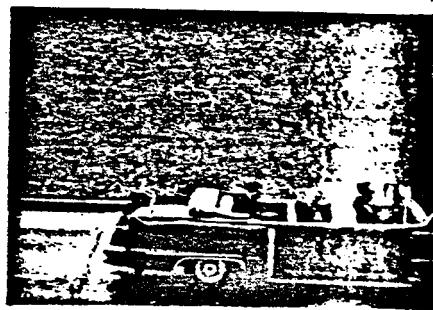
PHOTOGRAPH FROM NEX FILM



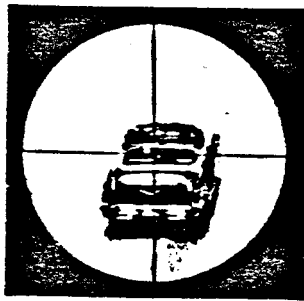
PHOTOGRAPH FROM RE-ENACTMENT



PHOTOGRAPH FROM ZAPRUDER FILM



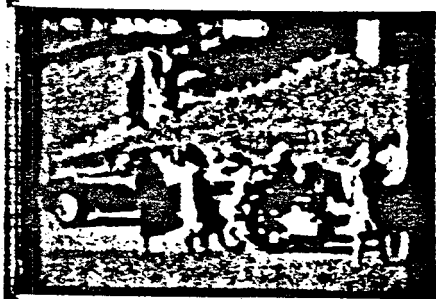
PHOTOGRAPH FROM RE-ENACTMENT



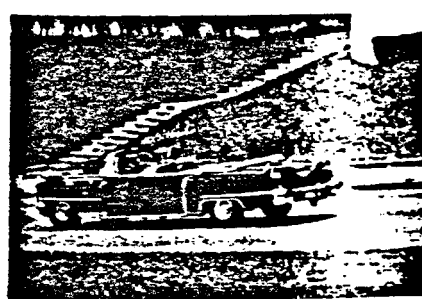
PHOTOGRAPH THROUGH RIFLE SCOPE

DISTANCE TO STATION C	238.8 FT.
DISTANCE TO RIFLE IN WINDOW	265.3 FT.
ANGLE TO RIFLE IN WINDOW	15°21'
DISTANCE TO OVERPASS	268.6 FT.
ANGLE TO OVERPASS	1°28'

FRAME 313



PHOTOGRAPH FROM MICHMORE FILM



PHOTOGRAPH FROM RE-ENACTMENT