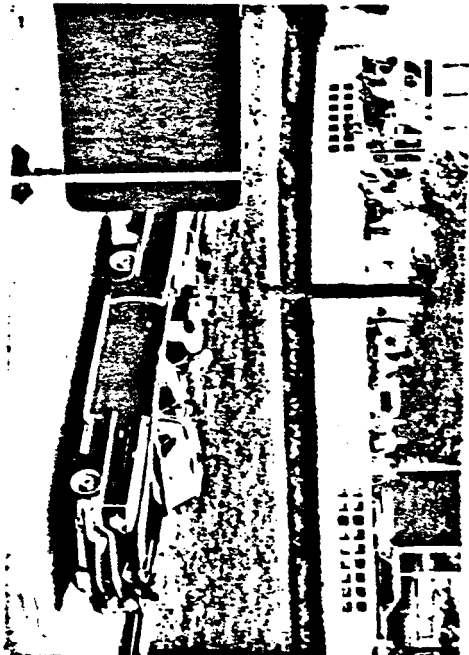
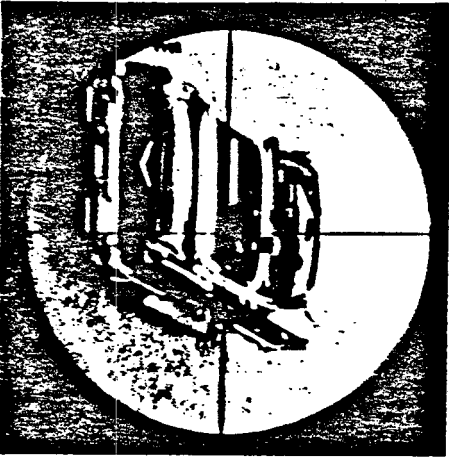


PHOTOGRAPH FROM ZAPRUDER FILM



PHOTOGRAPH FROM RE-ENACTMENT



PHOTOGRAPH THROUGH RIFLE SCOPE

DISTANCE TO STATION C 158.0 FT.
 DISTANCE TO RIFLE IN WINDOW 188.0 FT.
 ANGLE TO RIFLE IN WINDOW 18°47'
 DISTANCE TO OVERPASS 328.0 FT.
 ANGLE TO OVERPASS 8°28'

FRAME 231