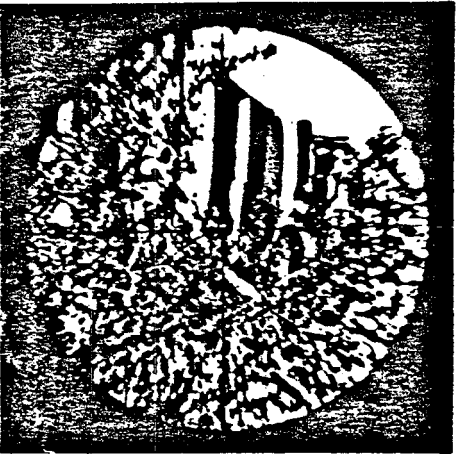




PHOTOGRAPH FROM ZAPRUDER FILM



PHOTOGRAPH FROM RE-ENACTMENT



PHOTOGRAPH THROUGH RIFLE SCOPE

DISTANCE TO STATION 1 318.3 FT.
 DISTANCE TO RIFLE IN WINDOW 150.3 FT.
 ANGLE TO RIFLE IN WINDOW 22°03'
 DISTANCE TO OVERPASS 371.7 FT.
 ANGLE TO OVERPASS 4°03'

FRAME 186