

Commission Exhibit No. 593

# Smith & Wesson Military & Police Revolver

By James M. Triggs

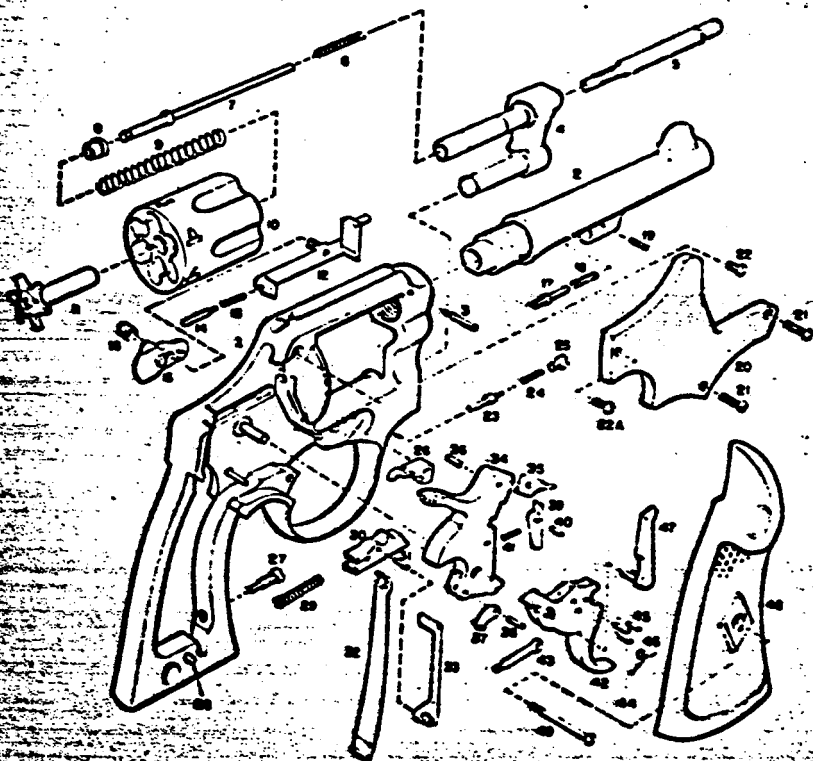
**D**URING the Spanish-American War, Smith & Wesson, Springfield, Mass., was tendered a government contract for 3000 cal. .38 double-action revolvers, of which 2000 were for the Navy and 1000 for the Army. The war ended before delivery of a single gun had been made, but the contract was

not canceled, and first deliveries were eventually made early in 1899. Designated the .38 Hand Ejector, Military & Police Model, this revolver was the first cal. .38 side-swing model to be made by Smith & Wesson. It was chambered for the .38 Colt long cartridge. The military version was made with

6½" barrel and walnut grips. The commercial model had hard rubber grips and 4" barrel.

The improved Model 1902 M&P introduced in that year was chambered for the new cal. .38 S&W Special cartridge, and also featured a front lock for the extractor rod.

The Model 1905 that superseded the Model 1902 also incorporated significant improvements. By 1942 over 1,000,000 M&P's had been manufactured. Under pressure of wartime need, Smith & Wesson in April 1942 began production of the Victory Model M&P with gray sandblast finish. Serial numbers were preceded by the letter 'V' and a new numbering series was begun. In December 1944 an improved hammer block was instituted and serial numbers were preceded by the letters 'VS' to indicate incorporation of this feature in the lock mechanism. With the coming of peace, and cancellation of government contracts, Smith & Wesson resumed production of commercial



### Parts Legend

1. Frame
2. Barrel
3. Barrel pin
4. Yoke
5. Extractor rod
6. Center pin spring
7. Center pin
8. Extractor rod collar
9. Extractor spring
10. Cylinder
11. Extractor
12. Bolt
13. Bolt plunger spring
14. Bolt plunger
15. Thumbpiece
16. Thumbpiece nut
17. Locking bolt
18. Locking bolt spring
19. Locking bolt pin
20. Side-plate
21. Side-plate screw, roundhead (S)
22. Side-plate screw, large head (discontinued)
- 22A. Side-plate screw, flathead
23. Cylinder stop plunger
24. Cylinder stop plunger spring
25. Cylinder stop screw
26. Cylinder stop
27. Strain screw
28. Stock pin
29. Rebound slide spring
30. Rebound slide
31. Rebound slide pin
32. Main spring
33. Hammer block
34. Hammer
35. Hammer nose
36. Hammer nose rivet
37. Stirrup
38. Stirrup pin
39. Seat
40. Seat pin
41. Seat spring
42. Trigger
43. Trigger lever
44. Trigger lever pin
45. Hand spring torsion pin (S)
46. Hand torsion spring
47. Hand
48. Stock
49. Stock screw

rec'd plate on March 10, 1942

