

File No.

Date Received

From

By

To Be Returned

Yes

No

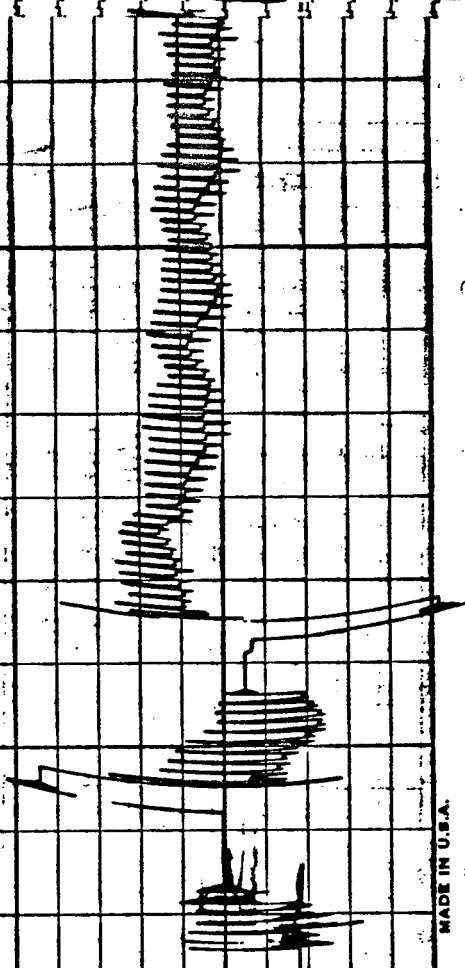
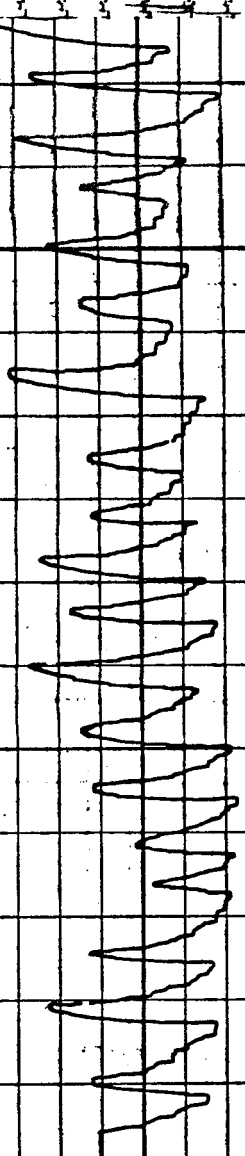
Description

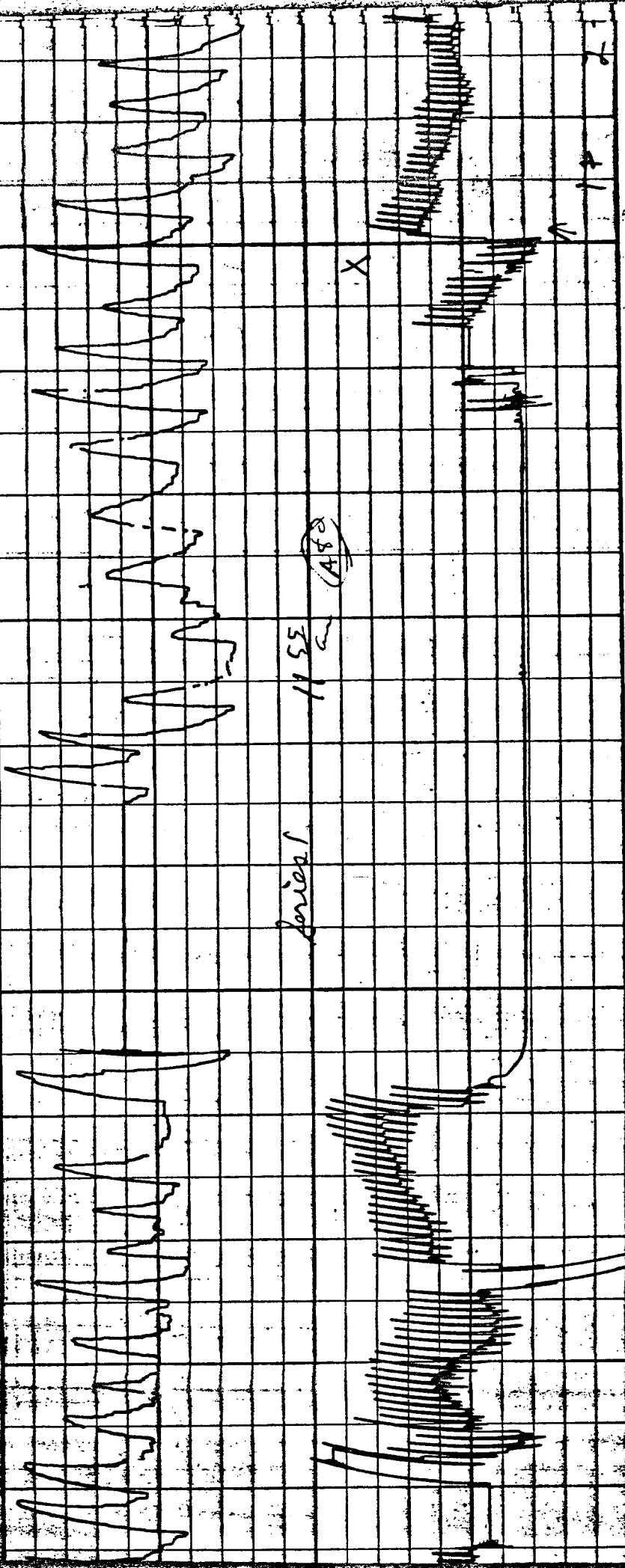
Handwritten description text, including "8 sets of..." and "Plymouth..."

DL 100-10461

Alfredson
1-4-63
Dallas, Texas

SA C. Ray Hall
SA Wanda C.
De Buys

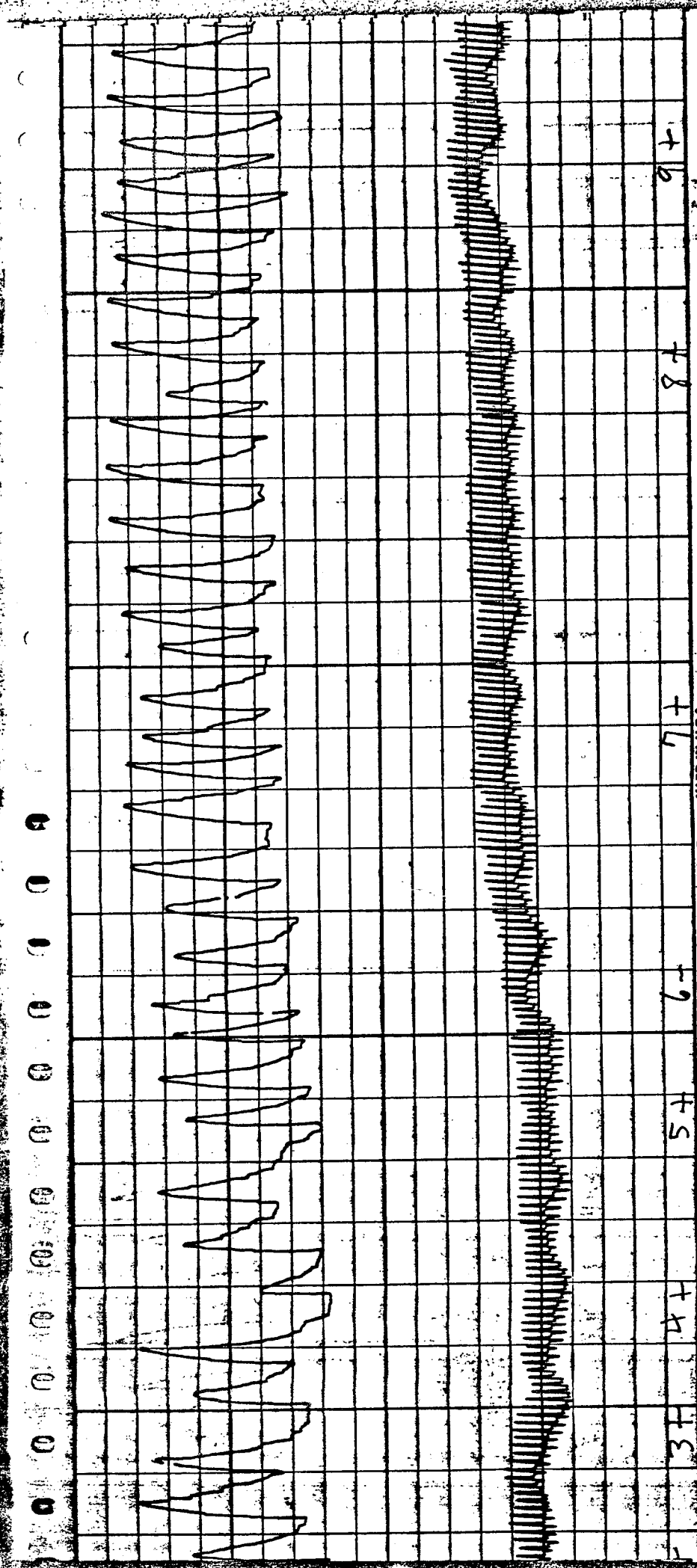




Series 1

1155

(A)



9+

8+

7+

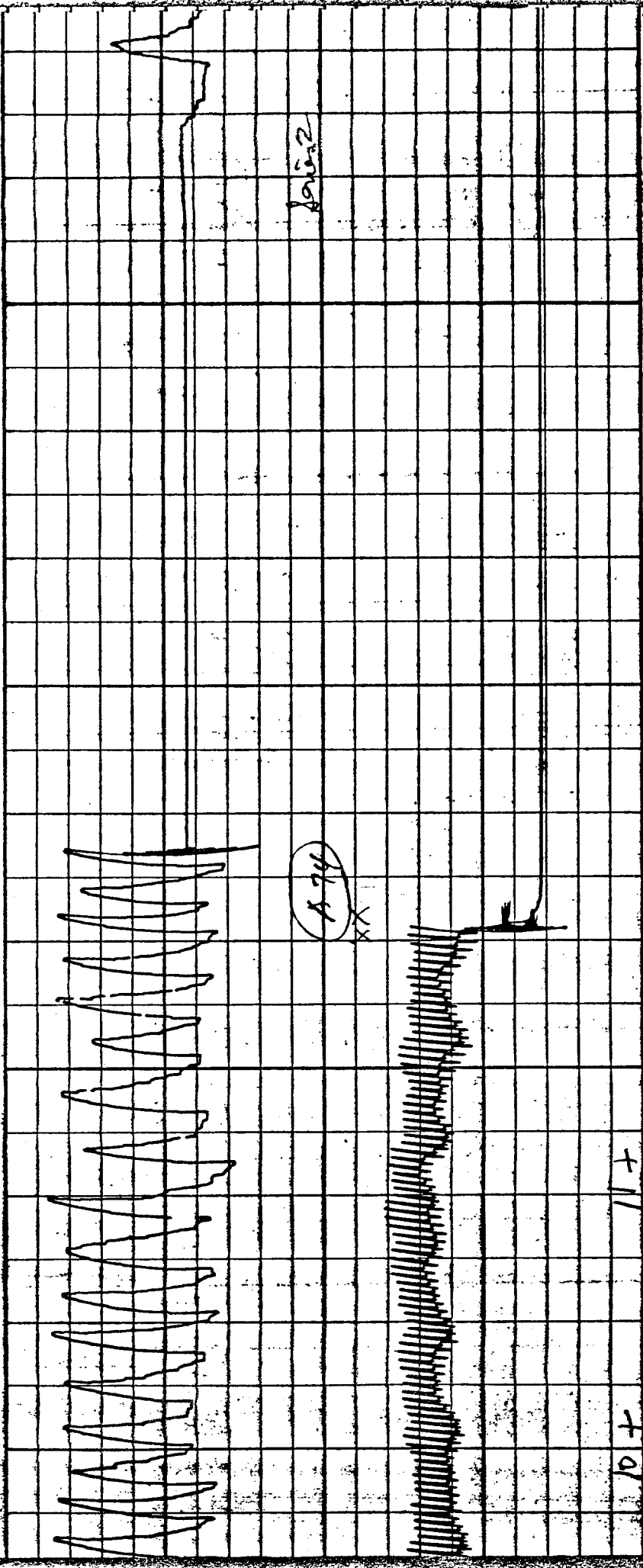
6+

5+

4+

3+

C. H. STOELTING CO. CHICAGO 24, ILL. U.S.A. CHART NO. 22495B MADE IN U.S.A.



1012

114

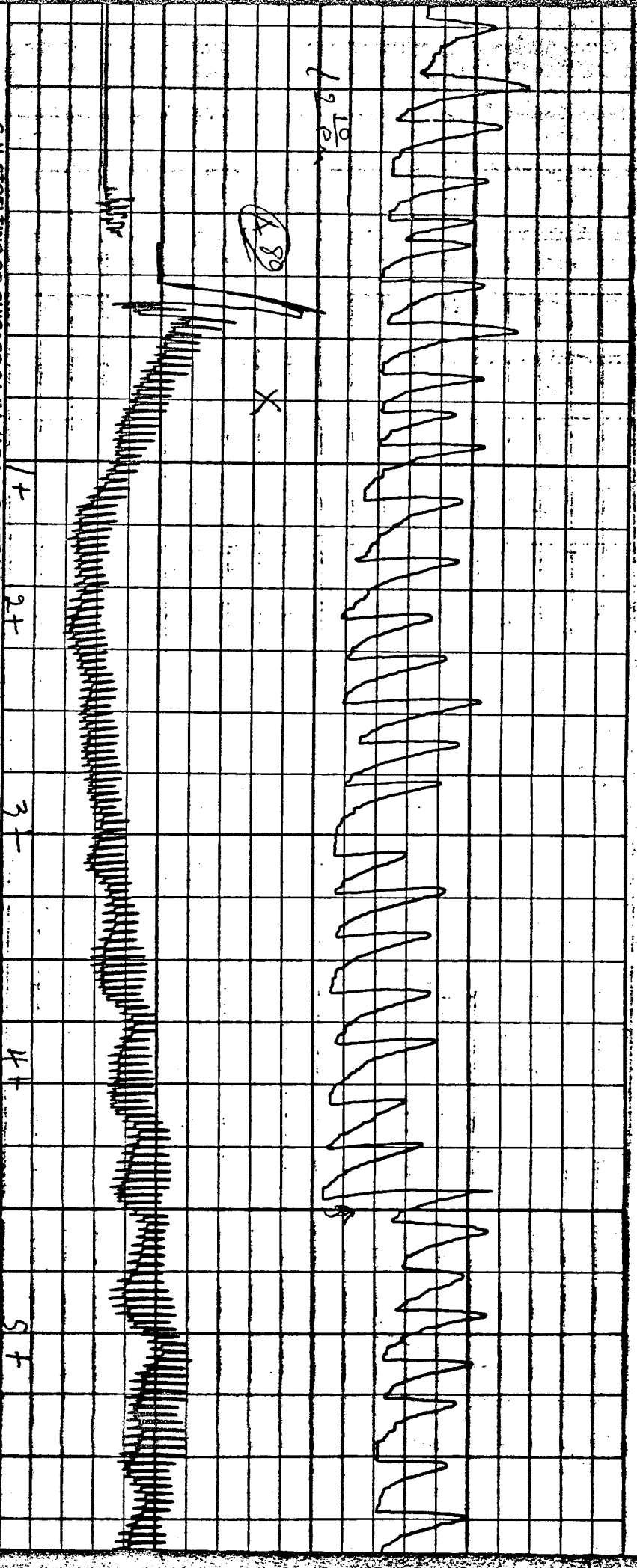
114

114

C. H. STOLTING CO. CHICAGO 24, ILL. U.S.A. CHART NO. 22-4958 MADE IN U.S.A.

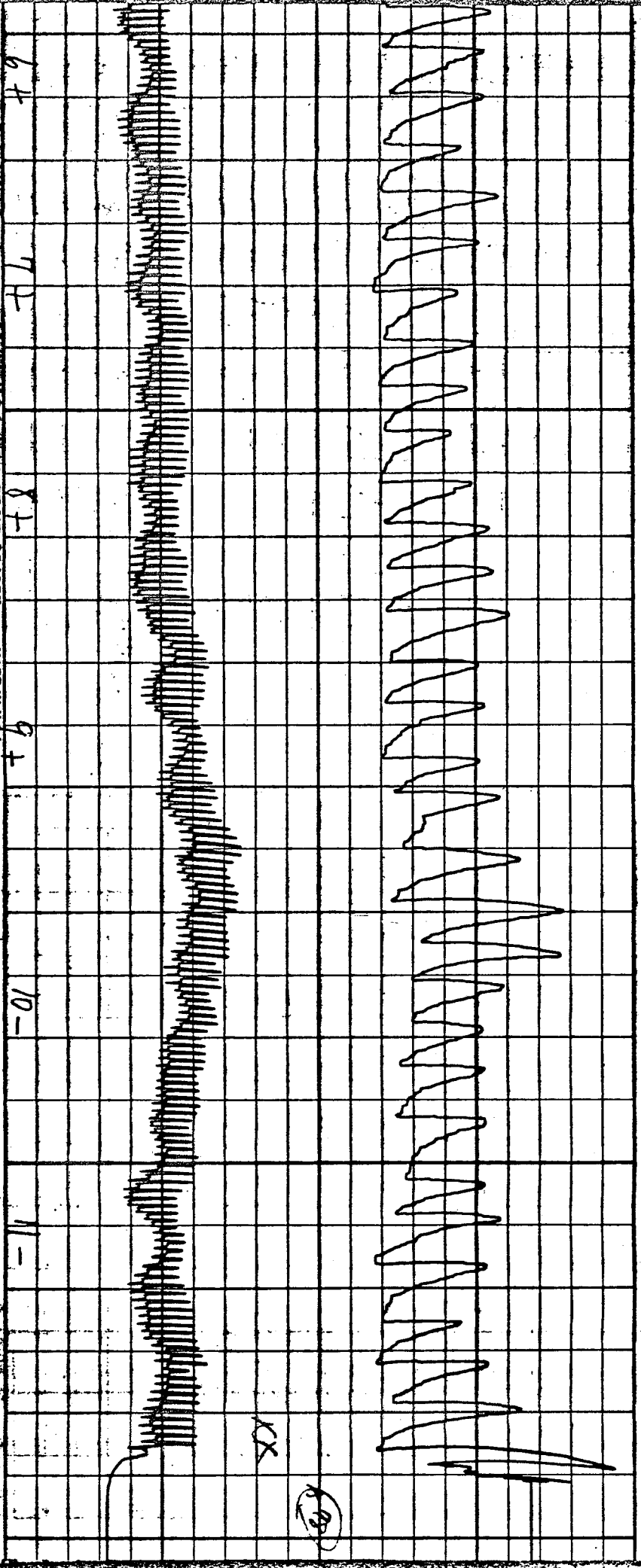
0 1 2 3 4 5 6 7 8 9 10 11 12 13 14 15 16 17 18 19 20 21 22 23 24 25 26 27 28 29 30 31 32 33 34 35 36 37 38 39 40 41 42 43 44 45 46 47 48 49 50 51 52 53 54 55 56 57 58 59 60 61 62 63 64 65 66 67 68 69 70 71 72 73 74 75 76 77 78 79 80 81 82 83 84 85 86 87 88 89 90 91 92 93 94 95 96 97 98 99

C. H. STOLTING CO. CHICAGO 24, ILL. U.S.A. CHART NO. 22458B MADE IN U.S.A.



C. H. STOLTING CO. CHICAGO 24, ILL. U.S.A. CHART NO. 32495B

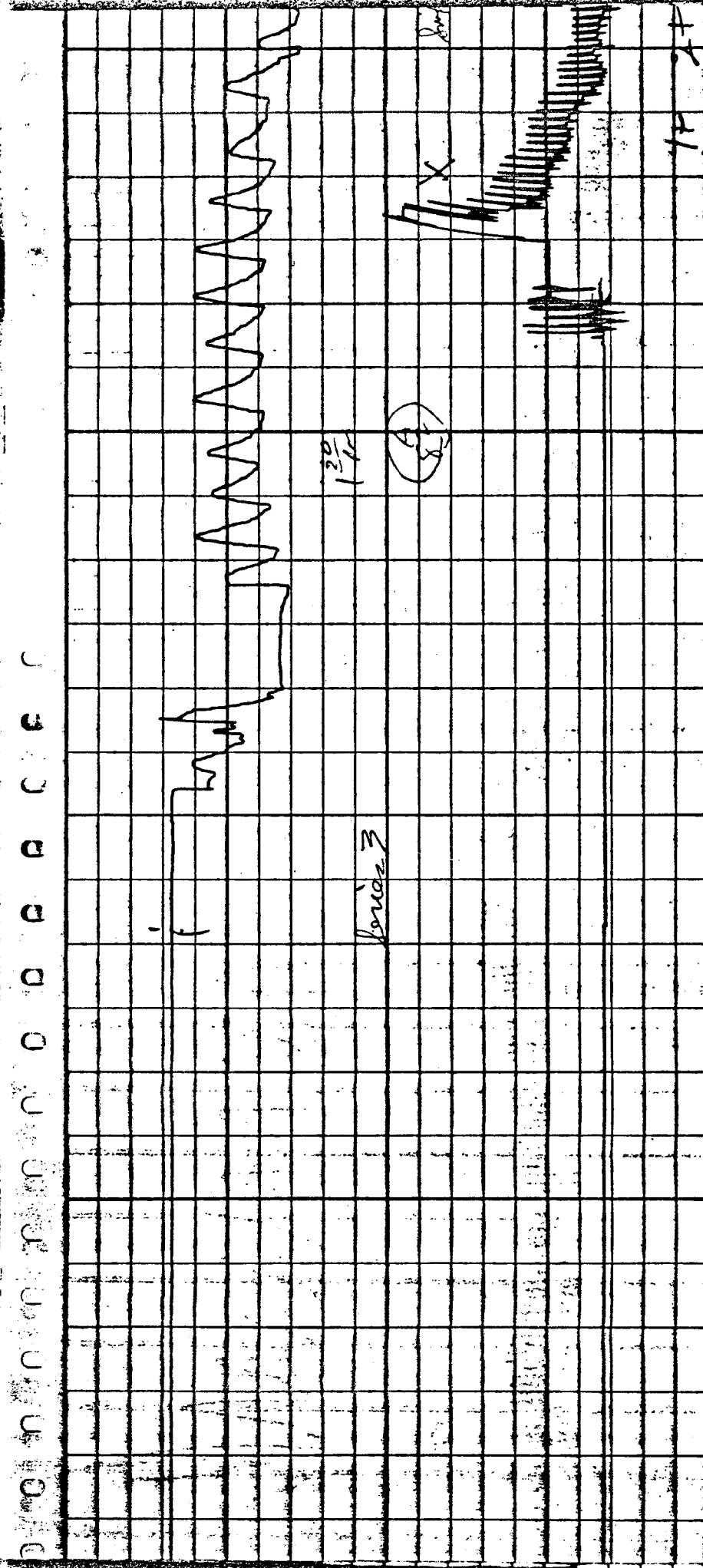
MADE IN U.S.A.



KX

(60)

0 1 2 3 4 5 6 7 8 9 10 11 12



30
1/2

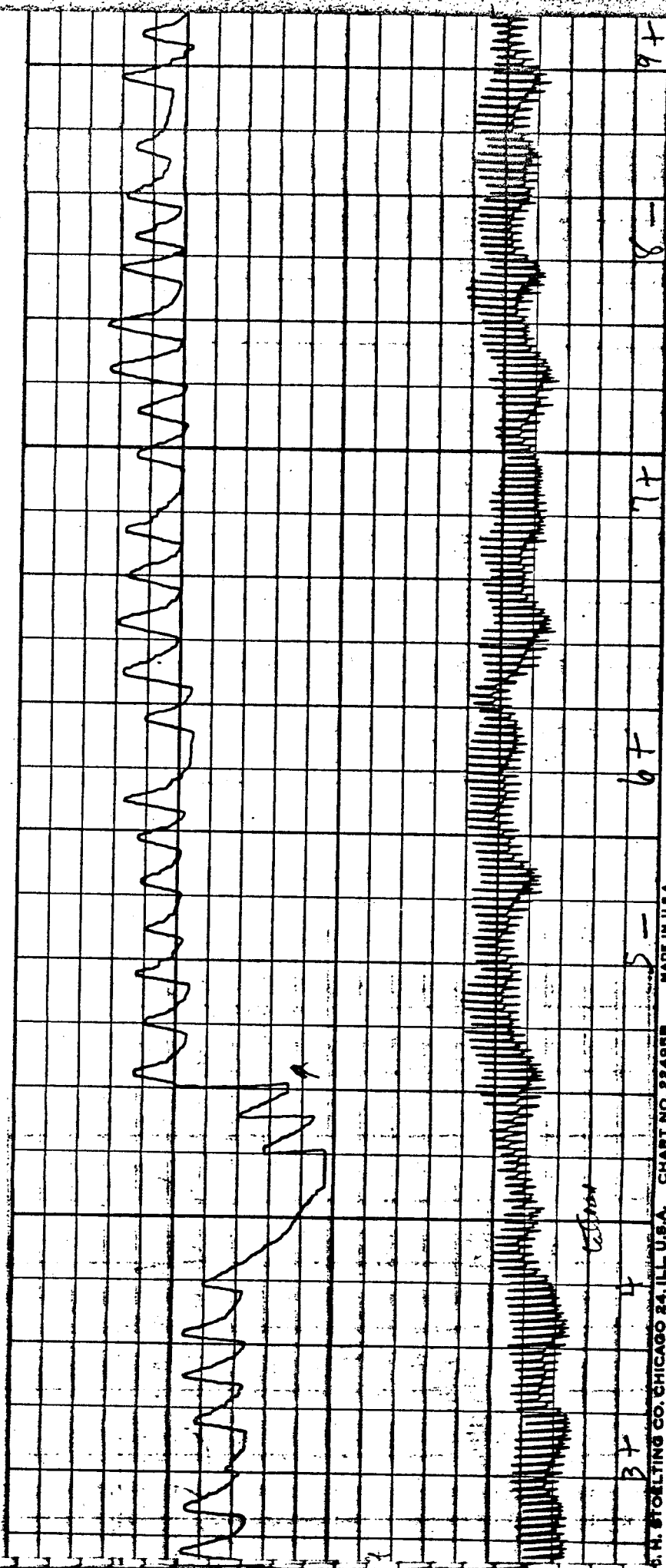
(5)

Series 3

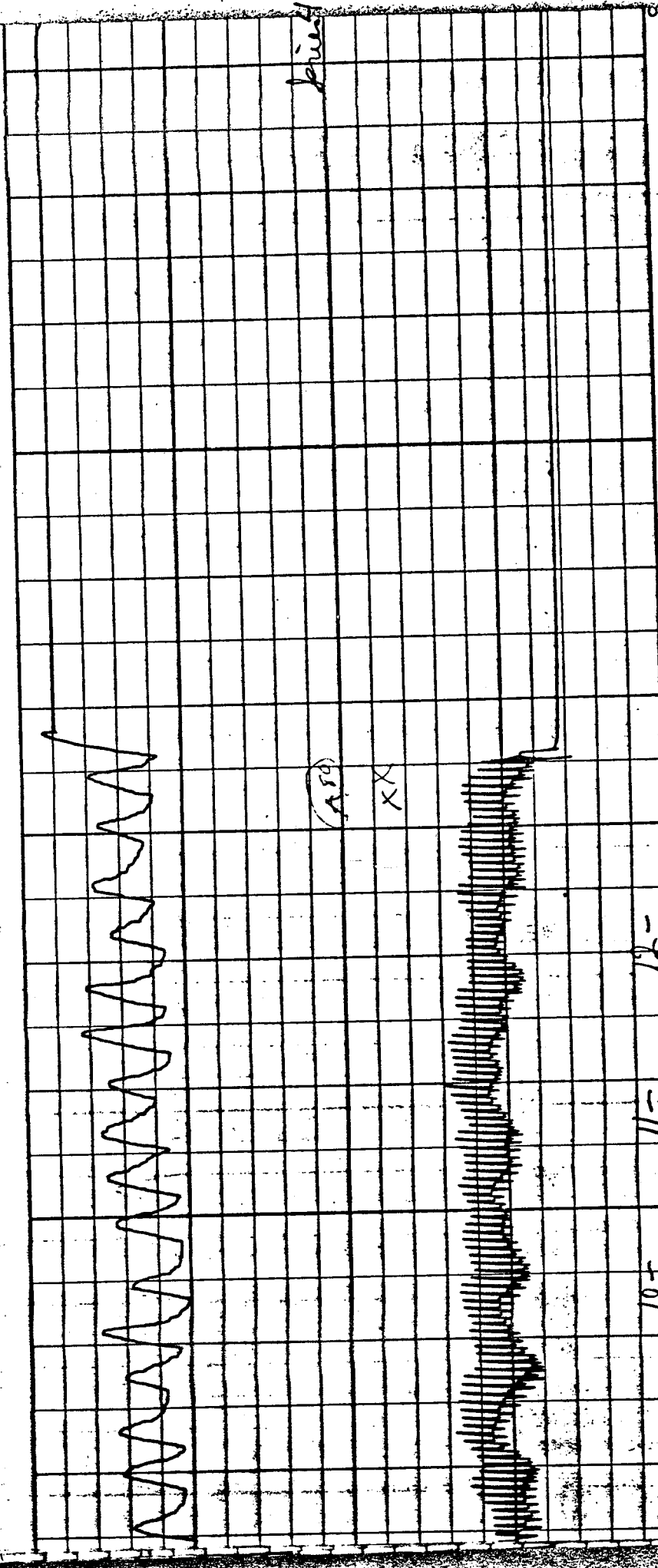
X

1P 27

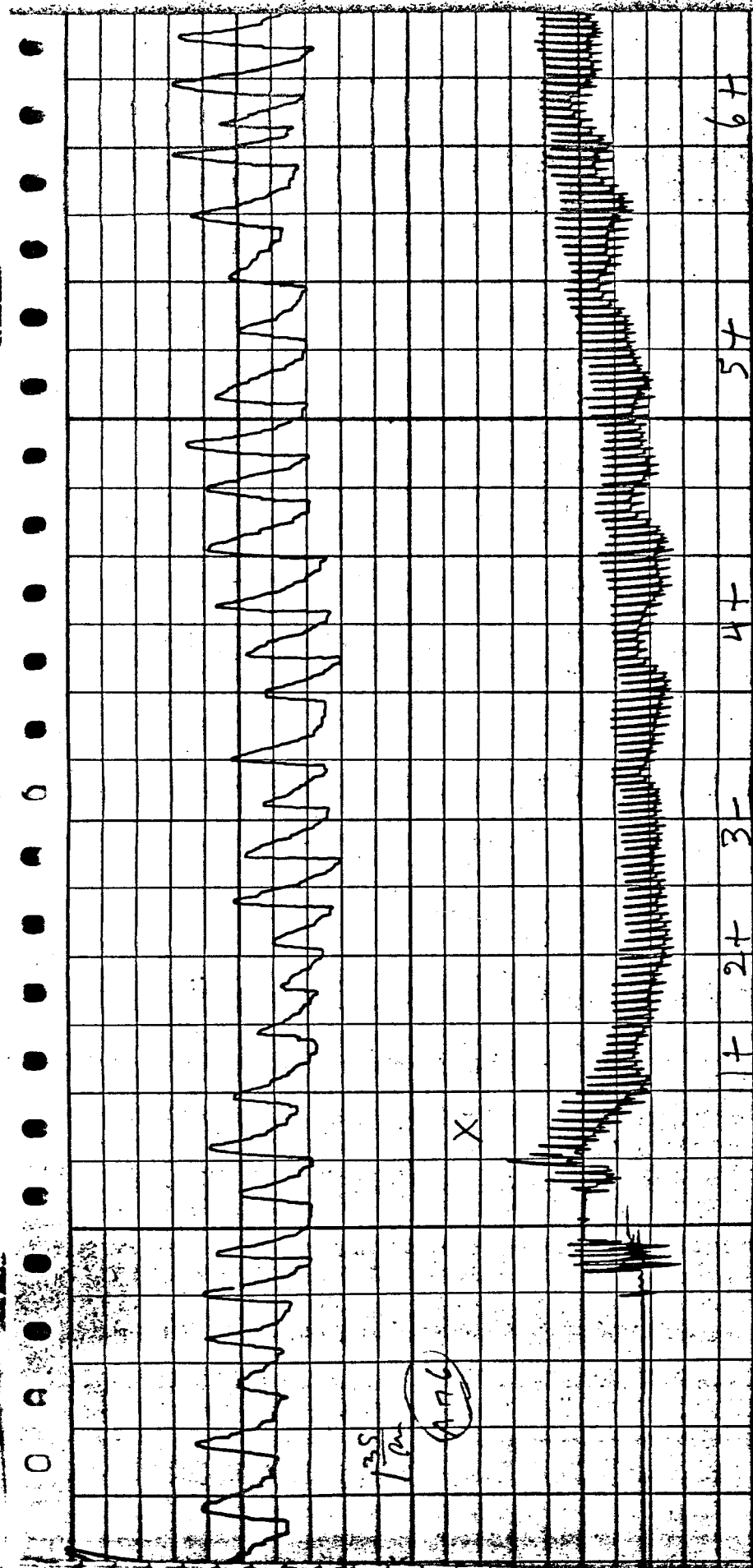
C. H. STOLLING CO. CHICAGO 24, ILL. U.S.A. CHART NO. 22498B MADE IN U.S.A.



H. STORLING CO. CHICAGO 24, ILL. U.S.A. CHART NO. 22495B MADE IN U.S.A.



H. STOLTING CO. CHICAGO 24, ILL. U.S.A. CHART NO. 22495B MADE IN U.S.A.



100
bpm

(100)

X

6H

5H

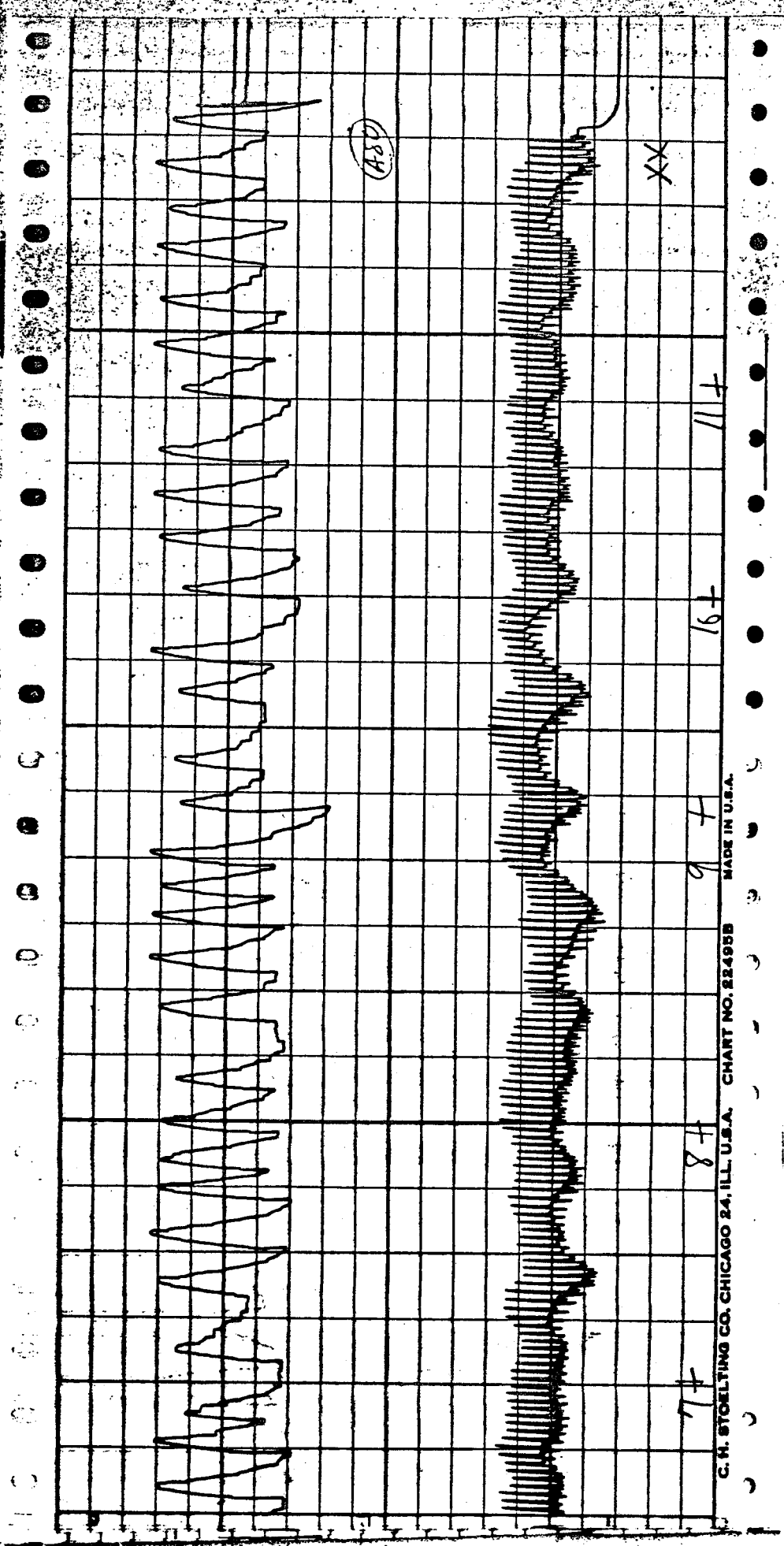
4H

3H

2H

1H

STORLING CO. CHICAGO 24, ILL. U.S.A. CHART NO. 224988 MADE IN U.S.A.



G. H. STOKELING CO. CHICAGO 24, ILL. U.S.A. CHART NO. 22495B MADE IN U.S.A.

1-4-64

D^o 100-10461

Series 1

1. Is your true name Ralph Leon Yates
2. Do you live in Dallas County.
3. Do you work for Texas Butcher Supply Co.
4. Do you intend to tell me the truth today.
5. Do you smoke.
6. ^{deliberately} Did you furnish any false information to the FBI
7. ^{deliberately} Did you ~~deliberately~~ [REDACTED] **b7c**
8. Did you pick up a hitch hiker ~~while on your way~~ along the Houston Expressway.
9. Did this hitch hiker have a package with him.
10. ^{deliberately} tell you he had certain rods in the package.
11. Did you answer that last question truthfully.

Series 2

1. were you born in 1936.
2. were you ever in the USAF,
3. Did this hitchhiker ask you if you knew Jack Rubenstein, or Ruby
4. show you a photograph of himself.
5. was this hitchhiker Lee Harvey Oswald. **b7c**
6. ~~_____~~
7. ~~_____~~ **b7c**
8. Is your wife's name Dorothy
9. Have you told anyone you picked up Lee Harvey Oswald as a hitch-hiker.
10. Have you told anyone else anything different from what you told the FBI.
11. Have you told any newspaper reporter that you picked up Lee Harvey Oswald

Series 3

1. were you born in Texas.
2. Do you have a Chauffeur's license.
3. Is your mother's name Bernice.
4. Hye [REDACTED] b7c
5. Did this hitch-hiker talk to you about killing the president.
6. Show you his photo holding a rifle and a revolver.
7. Did you let this hitchhiker out of your truck at Elm + Houston Streets.
8. [REDACTED]
9. Hye [REDACTED] b7c b7c
10. Have you ^{submitted} any false reports to any police dept.
11. Hye been inside the Carousel Club.
12. Do you know Jack Ruby.

b7c

(P)


[REDACTED]

[REDACTED]

[REDACTED]

[REDACTED]

Series 4

1. Were you born in Texas
2. Do you have a ^{commercial} chauffeur's license
3. Did you ^{willingly} furnish any false information to ^{anyone in} the FBI.
4. Did this hit of pipes you picked up on the Santa Express, have a package
5. tell you he had certain rods in the package.
6. Did " " show you a photo of himself holding a rifle.
7. Do you believe this hit of pipes was Lee Harvey Oswald. **b7c**
8. Yes 
9. Do you know for sure ^{that} this hit of pipes mentioned the name Jack Lubenstein or Jack Kelly.
10. Did this hit of pipes talk to you about shooting someone from a window
11. Are you sure this " was Lee Harvey Oswald.