

(Mount Clipping in Space Below)

Window at Shaw Hearing Site Is Draped as Sniper Precaution

Picture in Sec. 1, Page 3
A security cloak surrounding conspiracy defendant Clay L. Shaw has extended itself to a large window at the end of the second-floor hallway of the criminal courts building.

Shaw, charged with conspiracy in the death of President John F. Kennedy, must appear Tuesday in the courtroom of Judge Edward A. Haggerty Jr., which is adjacent to the window.

To block the view of any possible snipers, criminal Sheriff Louis A. Heyd Jr. rented a large set of drapes to cover the large window, which is about 19 ft wide and 10 ft high and faces on S. White.

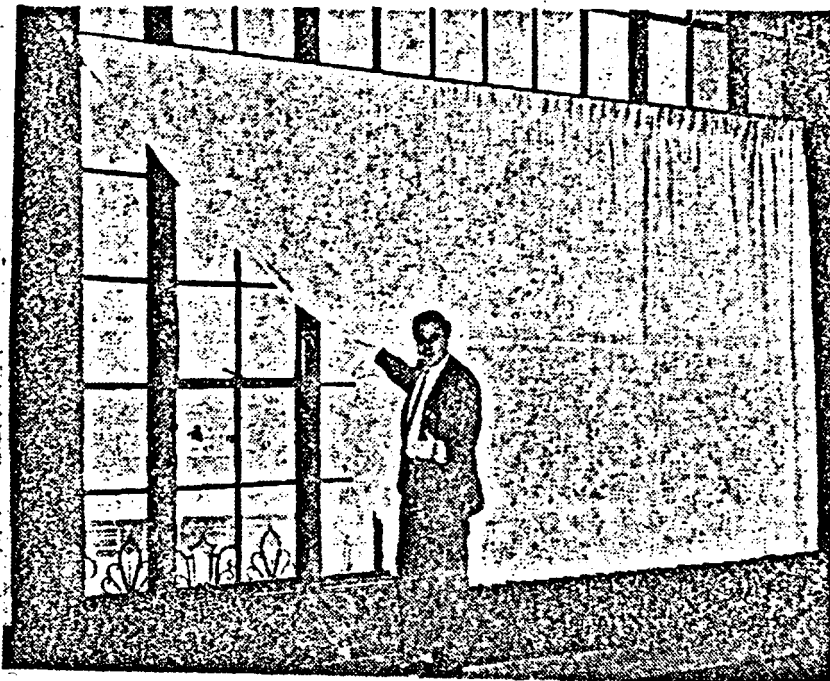
Shaw's trial was to have begun Tuesday, but defense attorneys filed for a change of venue, causing a postponement. Because the trial was officially set, Shaw himself and his attorneys must appear anyway to formally request a continuance.

Heyd said he had in mind protecting not only Shaw, but everyone else connected with the trial, including Dist. Atty. Jim Garrison himself.

"The window gave a perfect view from the rooftops across the street from the court building," he said.

Garrison has claimed his life was threatened several times since his assassination probe became public nearly one year ago.

Shaw Appearance Prompts Drape Installation



CRIMINAL SHERIFF Louis A. Heyd Jr. shows the drapes installed on the windows of the Criminal Courts Building as a security measure. The action was taken in connection

with Tuesday's court appearance of Clay L. Shaw, accused to conspiring to assassinate President John F. Kennedy. (Story on Page 1.)

—Photo by The Times-Picayune

(Indicate page, name of newspaper, city and state.)

PAGE 1

SECTION 1

TIMES PICAYUNE

NEW ORLEANS, LA

Date: 2-13-68

Edition:

Author:

Editor: GEORGE W. HEAL

Title: ASSASSINATION

PRESIDENT JOHN F. KENNEDY, DALLAS, TEXAS

11-22-63

Character: AFO

Classification: 89-

Submitting Office: N.O., LA

Being Investigated

62-109160-518
ENCLOSURE