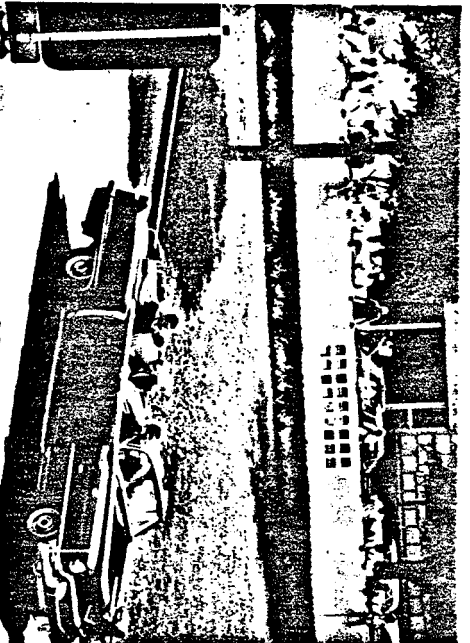
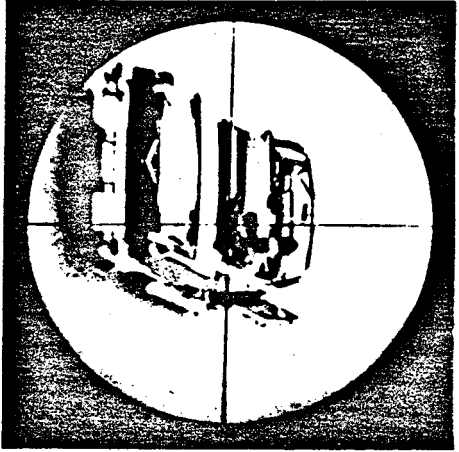


PHOTOGRAPH FROM ZAPRUDER FILM



PHOTOGRAPH FROM RE-ENACTMENT



PHOTOGRAPH THROUGH RIFLE SCOPE

DISTANCE TO STATION C	167.8 FT.
DISTANCE TO RIFLE IN WINDOW	204.3 FT.
ANGLE TO RIFLE IN WINDOW	19°01'
DISTANCE TO OVERPASS	320.4 FT.
ANGLE TO OVERPASS	+0°34'

FRAME 240