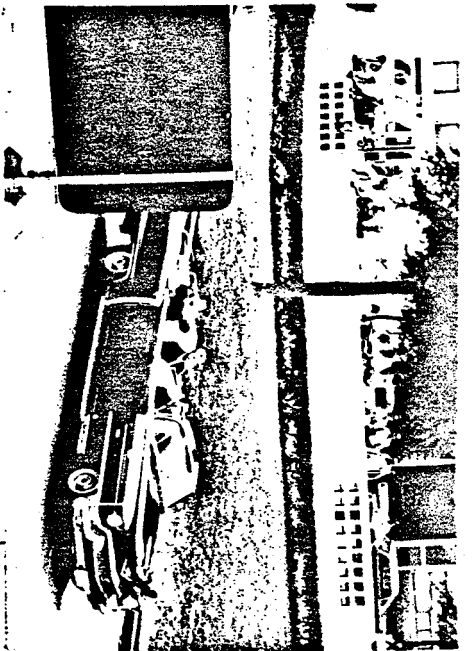
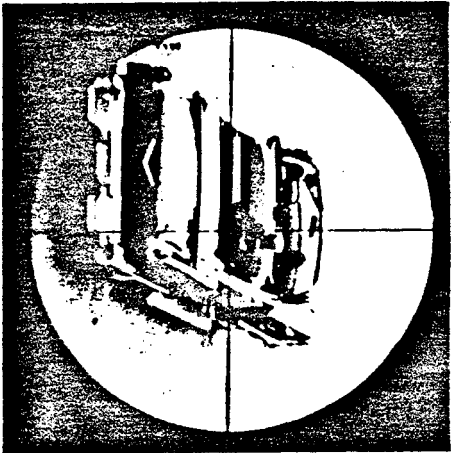


PHOTOGRAPH FROM ZAPRUDER FILM



PHOTOGRAPH FROM RE-ENACTMENT



PHOTOGRAPH THROUGH RIFLE SCOPE

DISTANCE TO STATION C	159.0 FT.
DISTANCE TO RIFLE IN WINDOW	196.0 FT.
ANGLE TO RIFLE IN WINDOW	19°47'
DISTANCE TO OVERPASS	329.0 FT.
ANGLE TO OVERPASS	+0°28'

FRAME 231