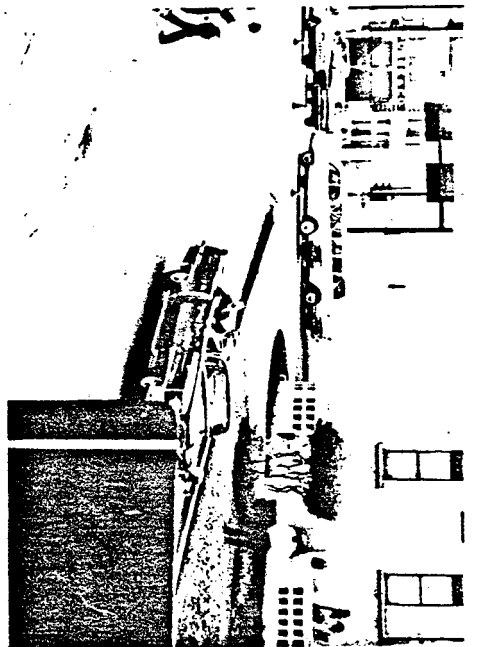
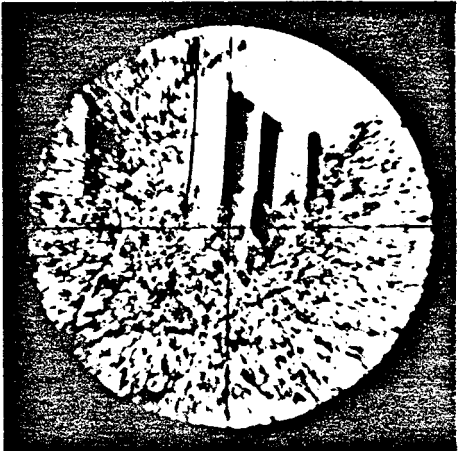




PHOTOGRAPH FROM ZAPRUDER FILM



PHOTOGRAPH FROM RE-ENACTMENT



PHOTOGRAPH THROUGH RIFLE SCOPE

DISTANCE TO STATION C	114.8 FT.
DISTANCE TO RIFLE IN WINDOW	154.9 FT.
ANGLE TO RIFLE IN WINDOW	24°14'
DISTANCE TO OVERPASS	372.5 FT.
ANGLE TO OVERPASS	+0°03'

FRAME 185