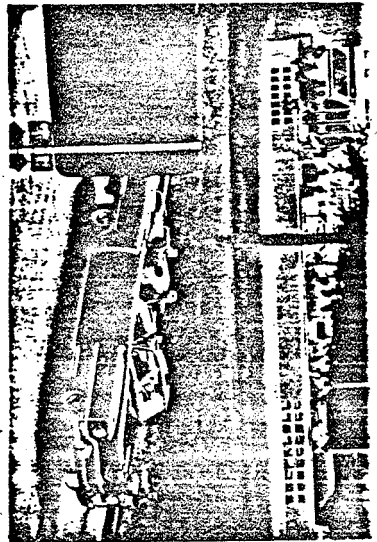
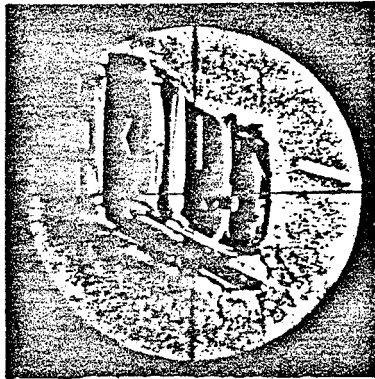


PHOTOGRAPH FROM ZAPRUDER FILM



PHOTOGRAPH FROM RE-ENACTMENT



PHOTOGRAPH THROUGH RIFLE SCOPE

DISTANCE TO STATION C 1540 FT.
DISTANCE TO RIFLE IN WINDOW 1880 FT.
ANGLE TO RIFLE IN WINDOW 15.4°
DISTANCE TO OVERPASS 3280 FT.
ANGLE TO OVERPASS 8.28°

FRAME 231