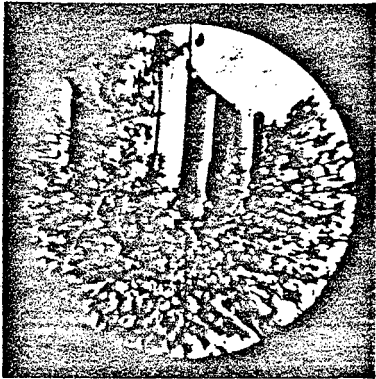




PHOTOGRAPH FROM ZAPRUDER FILM



PHOTOGRAPH FROM RE-ENACTMENT



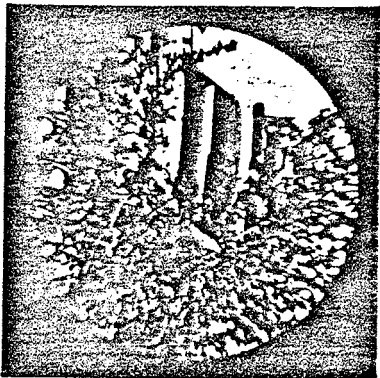
PHOTOGRAPH THROUGH RIFLE SCOPE

DISTANCE TO STATION C ..... 114.8 FT.  
DISTANCE TO RIFLE IN WINDOW ..... 154.9 FT.  
ANGLE TO RIFLE IN WINDOW ..... 21.74  
DISTANCE TO OVERPASS ..... 372.5 FT.  
ANGLE TO OVERPASS ..... 8.05

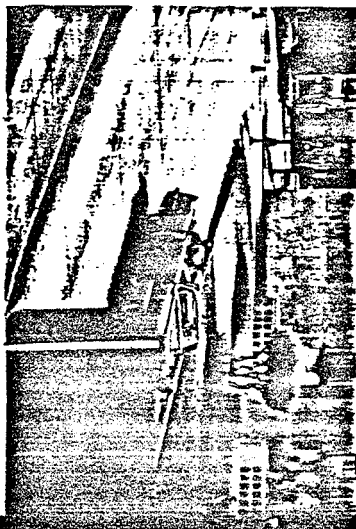
**FRAME 185**



PHOTOGRAPH FROM ZARRUDER FILM



PHOTOGRAPH THROUGH RIFLE SCOPE



PHOTOGRAPH FROM RE-ENACTMENT

DISTANCE TO STATION C	118.3 FT.
DISTANCE TO RIFLE IN WINDOW	158.3 FT.
ANGLE TO RIFLE IN WINDOW	2°03'
DISTANCE TO OVERPASS	371.7 FT.
ANGLE TO OVERPASS	0°00'

**FRAME 186**