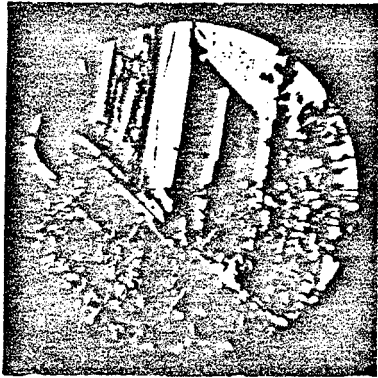
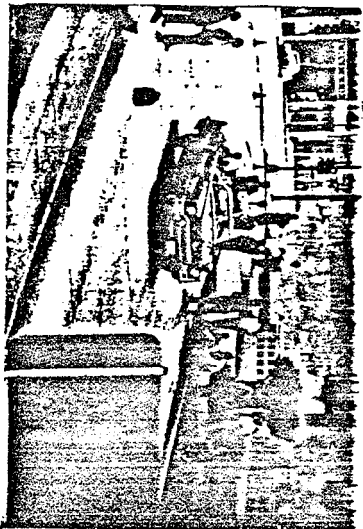


PHOTOGRAPH FROM ZAPRUDER FILM



PHOTOGRAPH THROUGH RIFLE SCOPE



PHOTOGRAPH FROM RE-SURVEY

DISTANCE TO STATION C 194.7 FT.  
DISTANCE TO RIFLE IN WINDOW 197.4 FT.  
ANGLE TO RIFLE IN WINDOW 1.26 DEG  
DISTANCE TO OVERPASS 327.4 FT.  
ANGLE TO OVERPASS 0.91

FRAME 161