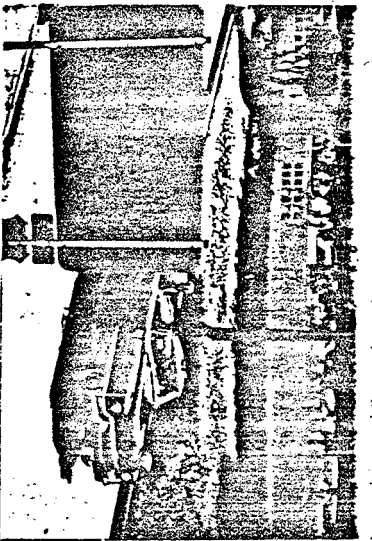
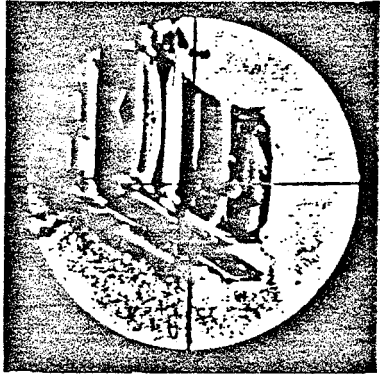


PHOTOGRAPH FROM ZAPRUDER FILM



PHOTOGRAPH FROM RE-ENACTMENT



PHOTOGRAPH THROUGH RIFLE SCOPE

DISTANCE TO STATION E 151.4 FT.
DISTANCE TO RIFLE IN WINDOW 188.8 FT.
ANGLE TO RIFLE IN WINDOW 20.9°
DISTANCE TO OVERPASS 338.4 FT.
ANGLE TO OVERPASS 0.4°

FRAME 222