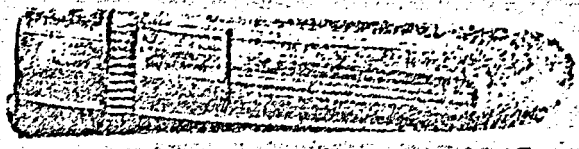


**DID THIS BULLET PASS THROUGH THE PRESIDENT
AND GOVERNOR CONNALLY, SHATTERING A RIB
AND A WRIST-BONE ALONG THE WAY?**



turn of colonial rule is a
and the catastrophic yes
turbulent independence,
1910-17 revolutionary pe
comprehensible—no easy
book will yield all that th
son needs to know about
nation to the south.

Maps illustrations
\$6.95 at your box

JAN 18 1968

RECEIVED DIRECTOR
FBI

JAN 15 11 06 AM '68

RECEIVED TOLSON
FBI

JAN 15 2 01 PM '68

JAN 15 12 09 PM '68
FBI ANNEX