

JFK

ASSASSINATION

62-109060

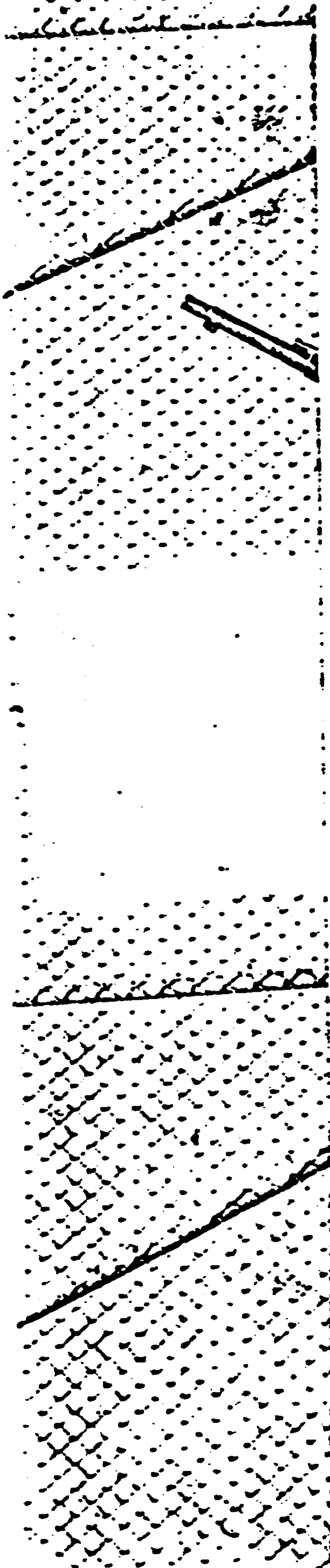
EBF

SERIAL 2661

RELEASE

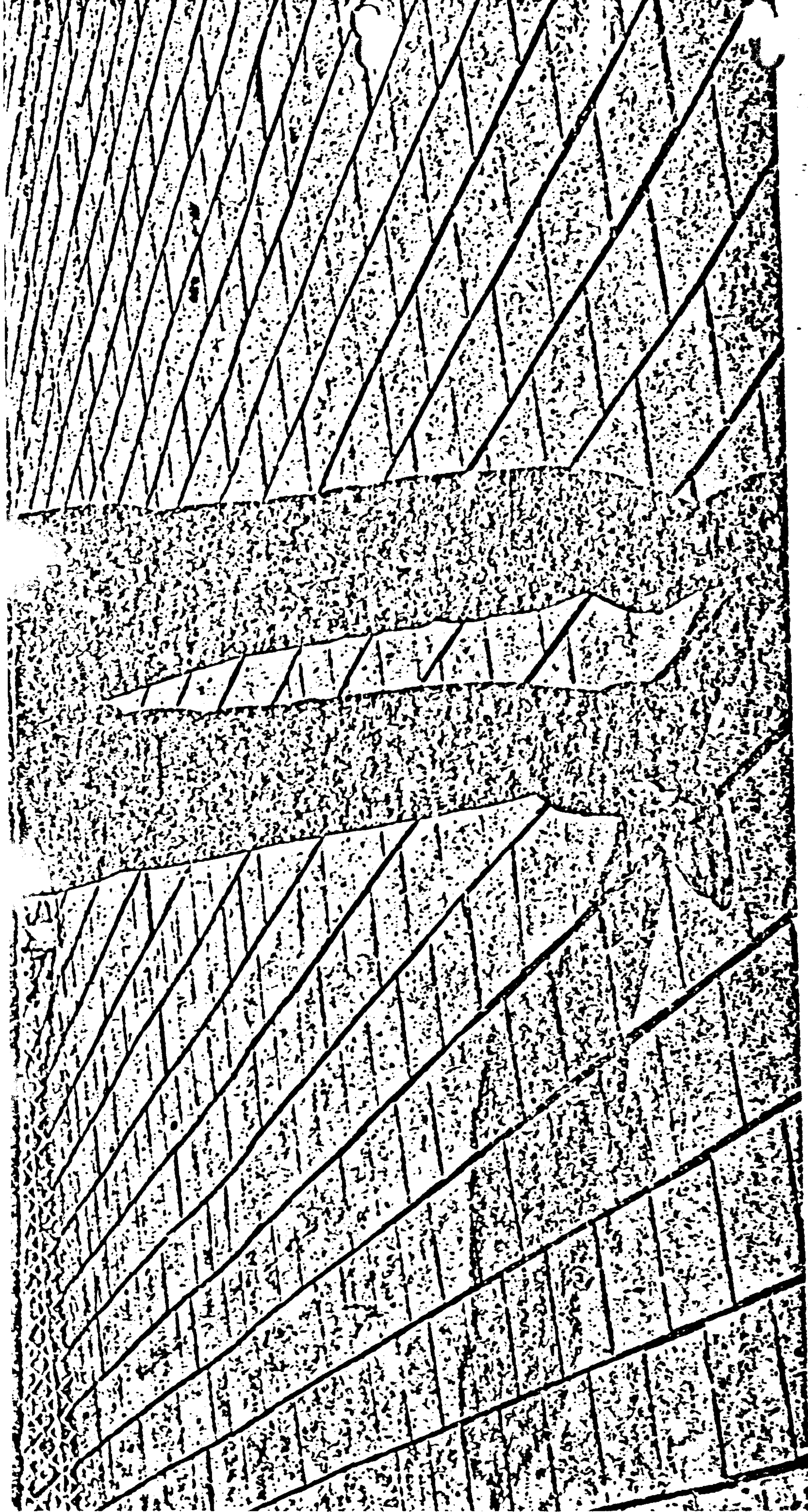
COPY

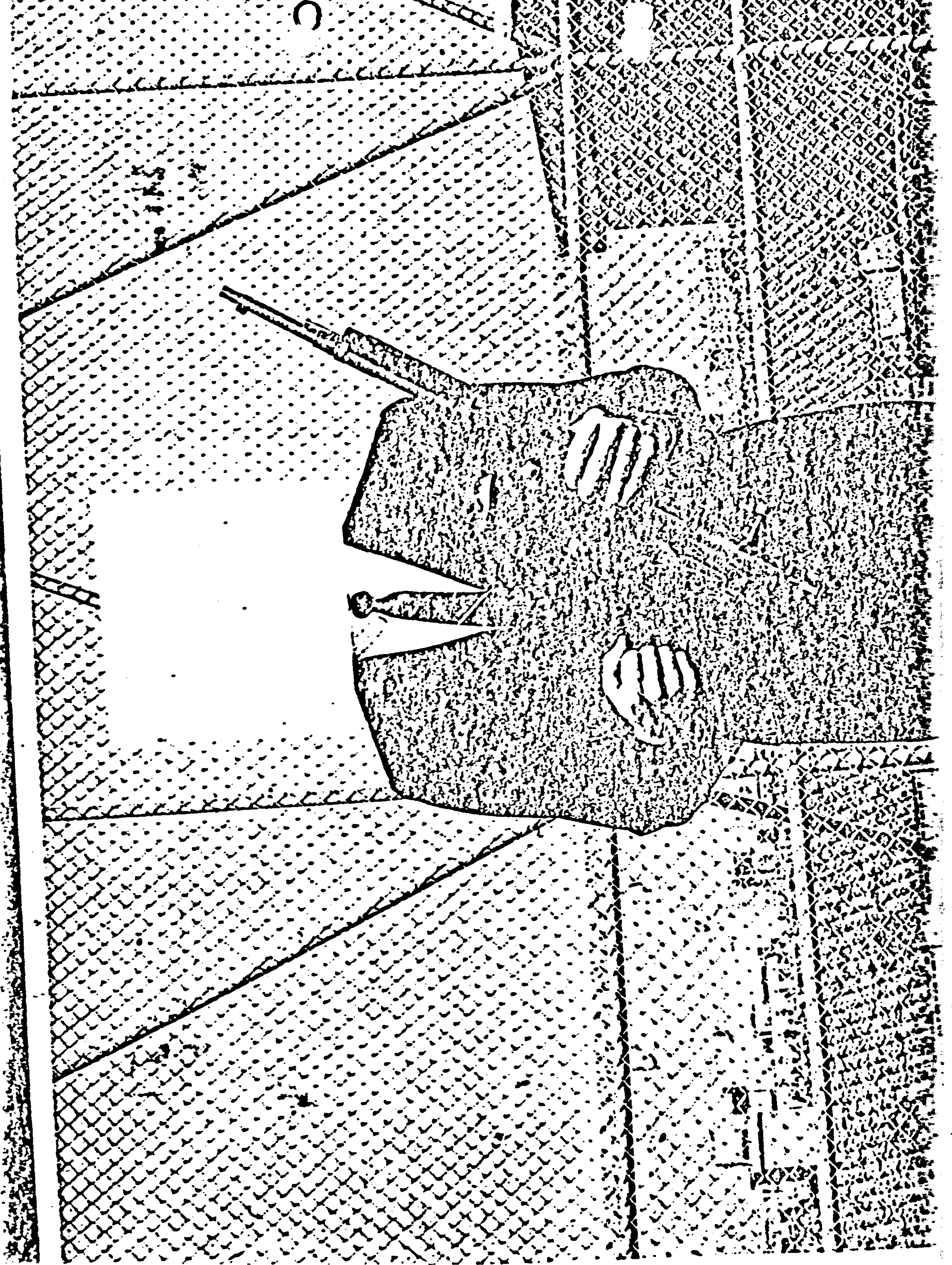
1



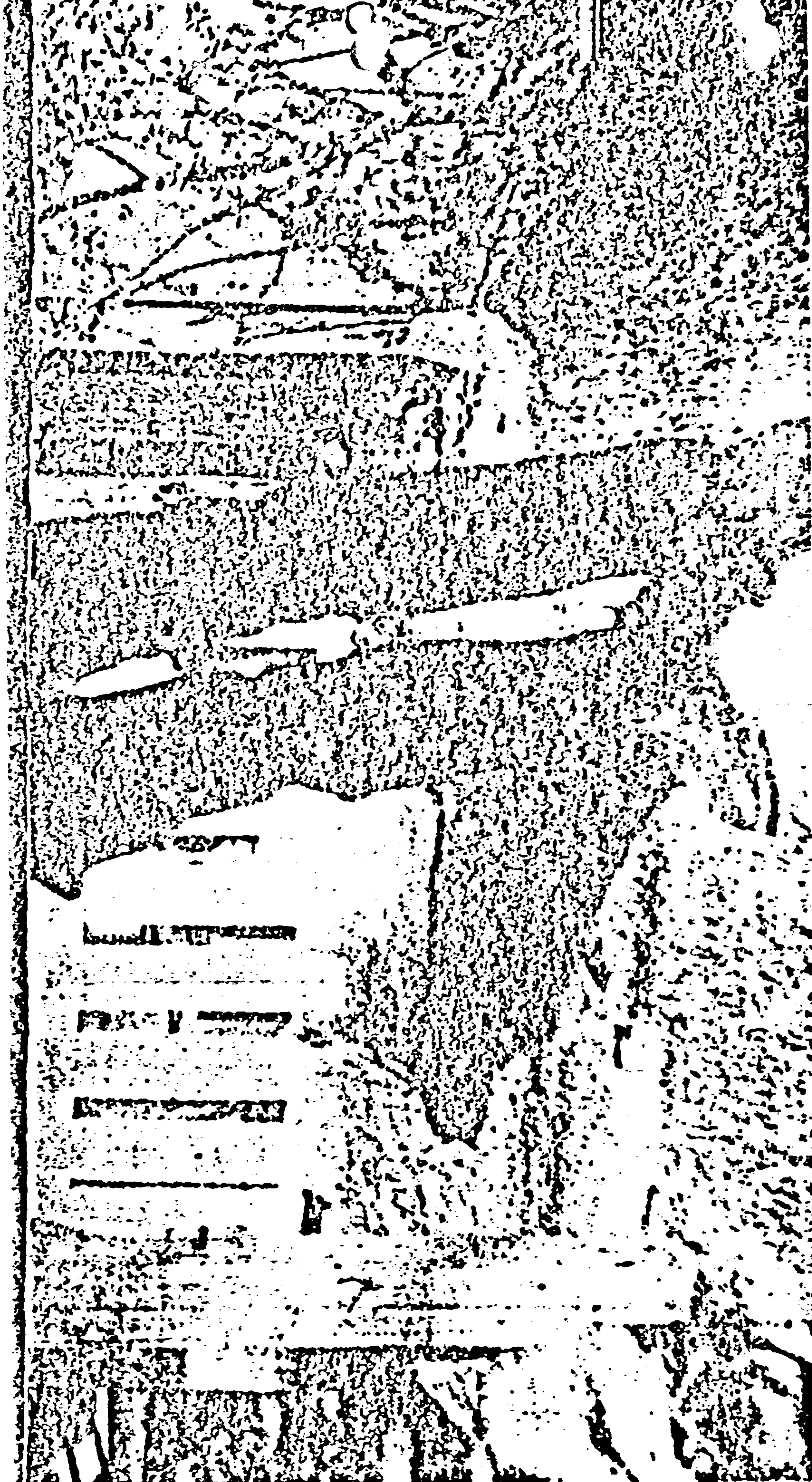
One copy of pose similar to the picture in exhibit 133.  
Photographic enlargement made by FBI Laboratory using  
4 x 5 camera

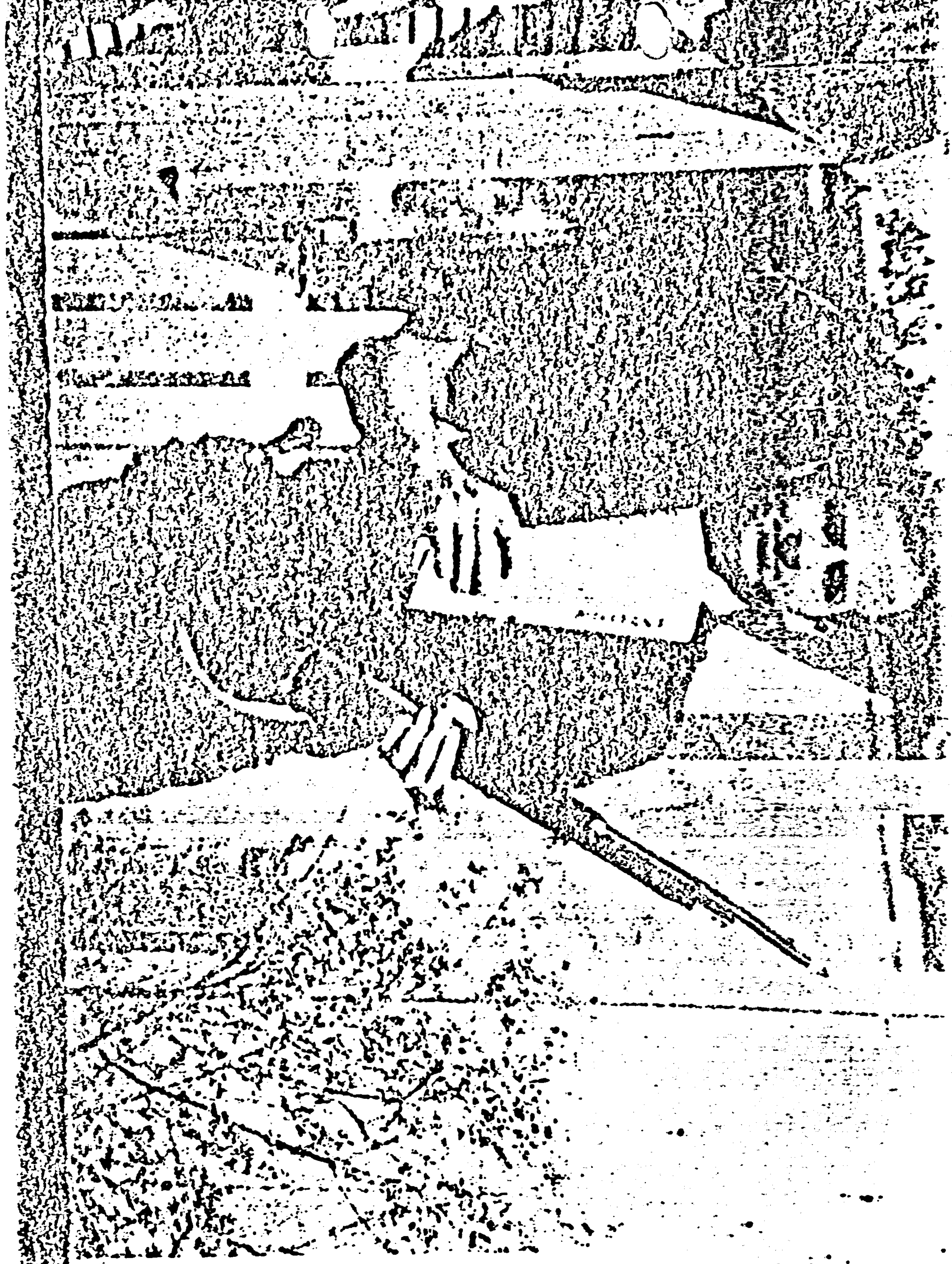
67-109060-2661





One copy of exhibit 133 photographically enlarged

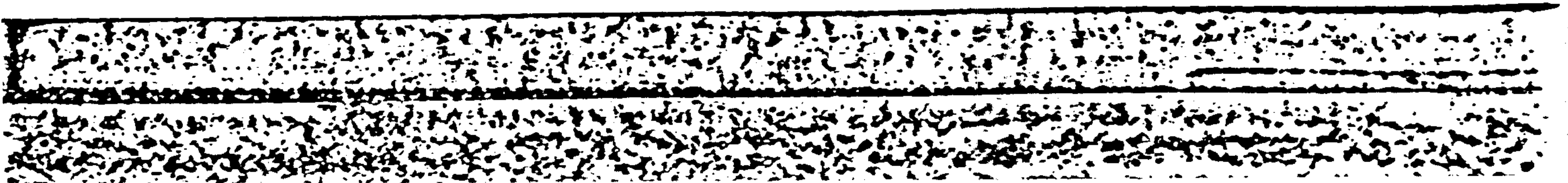




62-117611-29

One copy of photograph in exhibit 133





One copy of photograph of Oswald rifle being held in similar pose as exhibit 133 photograph and taken by FBI with Duo-lens Imperial reflex camera reportedly used in making the original photograph

