

ROUTE IN ENVELOPE

July 19, 1965

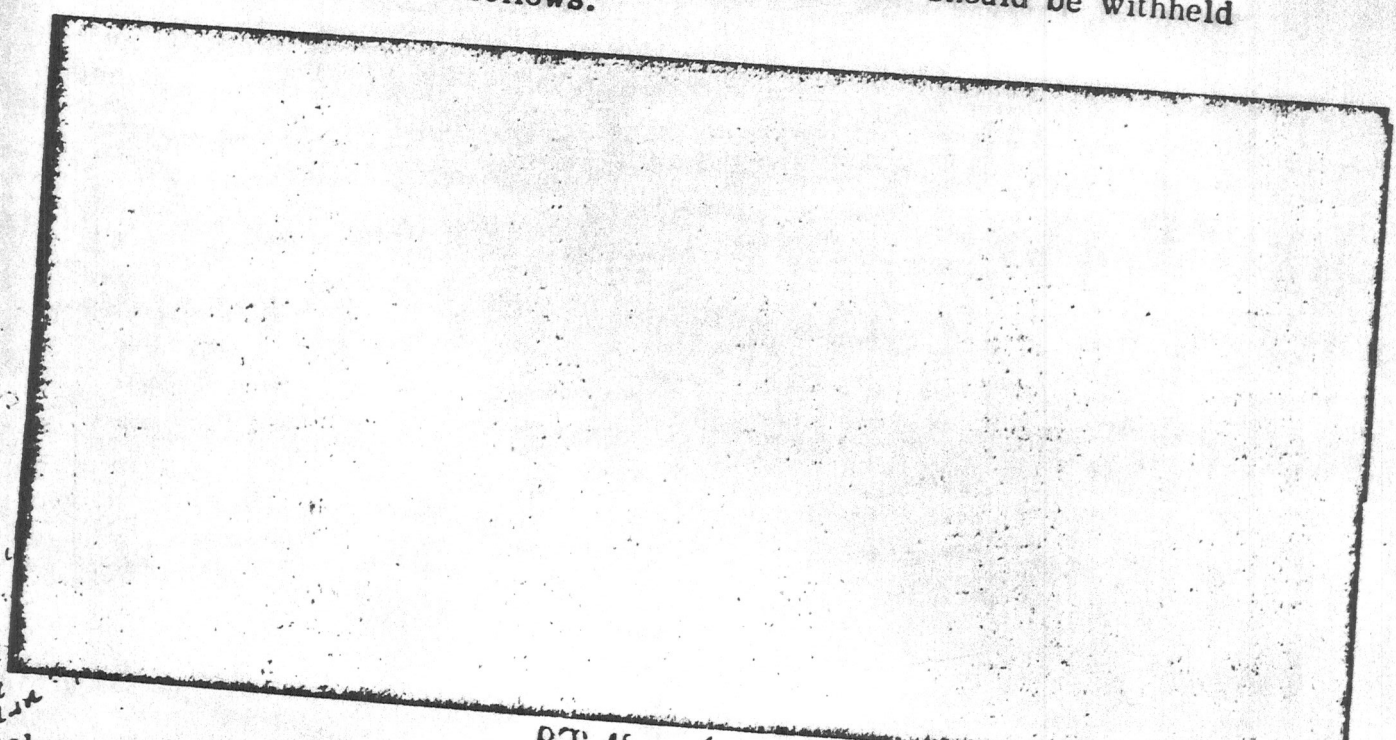
SECRET

*[Handwritten signatures and initials]*

TO: Inspector J. R. Malley

RE: COMMISSION DOCUMENTS ORIGINATING  
IN THE BUREAU  
PRESIDENT'S COMMISSION ON THE  
ASSASSINATION OF PRESIDENT KENNEDY

In connection with the pending review of documents originating in the Bureau that were submitted in connection with this matter looking toward public disclosure, the Laboratory has completed a review of the copies maintained of various Laboratory reports and other documents prepared in the Laboratory. In addition, the Laboratory has carefully scrutinized the 202-page listing of documents submitted for our review. Based upon these reviews two items were noted that should be withheld from public disclosure as follows:



enclosures (2)

- Mr. Sullivan (Mr. Stokes, Room 6M RB)
- Mr. Raupach, Room 5716
- Mr. Griffith

REC 45 62 - 109 090 - 466 (3)

AUG 23 1965

Classified by 2040  
Exempt from GDS, Category 1, 2, 3  
Date of declassification Indefinite  
er6/ak 1/10/78

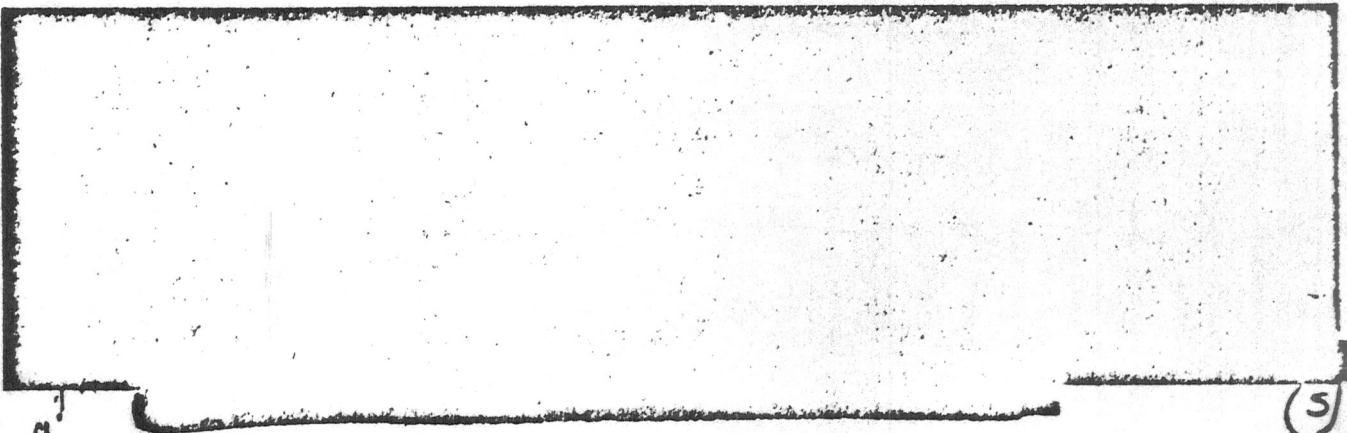
*[Handwritten marks]*



(3)

Copies of the two sensitive Laboratory reports are enclosed for General Investigative Division and Domestic Intelligence Division. U

No other patently objectionable documents were noted; however, for possible assistance and guidance of the other divisions conducting reviews, the following three items of possible significance were noted: U



(5)

3. Laboratory report dated 7/8/64, CR-12614 KA. The result of this examination is the decryption of two personal letters in Braille. The letters are answers to communications sent by an apparently mentally deranged blind person and do not deal directly with the Oswald matter. There is no question of cryptanalytic sensitivity, it is rather a question of personal aspects of the source of this material, which we are not in a position to evaluate. U

*B*  
*B. J. C.*

I. W. Conrad