

Biddle Reveals Nazi Blueprint For U. S. Setup

post 11/27/41
Reich Agent's Chart
Covers All Phases
Of American Life

A detailed blueprint for the organization of Nazi propaganda networks in the United States, acquired by Department of Justice operatives from a German agent, was revealed yesterday by Attorney General Francis Biddle.

The carefully worked out chart, designed to fit the needs of Hitler's propaganda machine in every quarter of the globe, was presented by the Attorney General as illustrating the urgent need for tightened legislative control of Nazi activities in this country.

Specifically, he referred to it as showing the strict control Germany exerts over her agents and thus as another pressing reason for the enactment of the new Foreign Agents Registration Act, pending in the Senate, which would drastically broaden the Justice Department's power over foreign agents.

The organization chart was taken directly from an organization manual of the National Socialist German Workers Party, Biddle asserted. He said the manual was taken from the possession of a known Nazi agent, but refused to divulge any information about the individual involved.

Handed to reporters both in photostatic copy of the original and

See AGENT, Page 4, Column 1.

a mimeographed translation, the foreign organization plan traces a vast administrative web, headed by a "Deputy of the Fuehrer."

Within it are included sections corresponding with every conceivable sphere of American life to which German propaganda efforts might be applied.

Labor front, education, foreign trade, harbor service, maritime activities and a speakers' placement bureau were among the divisions to be set up under the chart.

Legal Sections Provided

Even legal and inspection sections were provided in the thorough-going scheme.

Moreover, the bottom of the chart lists eight territorial divisions to which the organization is to be applied, covering virtually the entire surface of the earth.

The divisions listed were North America, Latin America, Africa, the Far East and Australia, north and east Europe, west Europe, south Europe and the European and Oriental southeast.

The Attorney General would not say whether the material was taken secretly by FBI men or whether it was found on an apprehended agent. He further declined to answer queries by reporters as to whether the agent involved was still at large or had been arrested or convicted.

No evidence of the actual operations of such a set-up within the United States has yet been uncovered, he stated, though official circles have long suspected the existence of such a prepared blueprint.

However, he added that foreign agents who have been questioned by the FBI assert that there are about 600 similar organizations scattered throughout the world under Reich supervision.

Stresses Excerpt

He particularly stressed an excerpt from the manual which stipulates that "all communication between party offices and the organizations of the National-Socialist German Workers Party abroad and in navigation must without exception be conducted under the direction of the foreign organization."

He connected this with provisions of the new agent-control legislation, introduced by Senator McKellar (Democrat), of Tennessee, which would require foreign operatives to label all mailed material with the

source from which it came, leaving "no question" about its nature.

He added that the Justice, State and Postoffice Departments were all cooperating in drafting the new and drastic legislation.

The new act would also broaden the definition of foreign agents to include persons operating under the subsidy of a foreign government whether within the United States or not.

It would transfer enforcement from the State Department to the Department of Justice, and also doubles existing penalties for agents who fail to register properly or otherwise violate the law's provisions.

Nazi Propaganda Networks

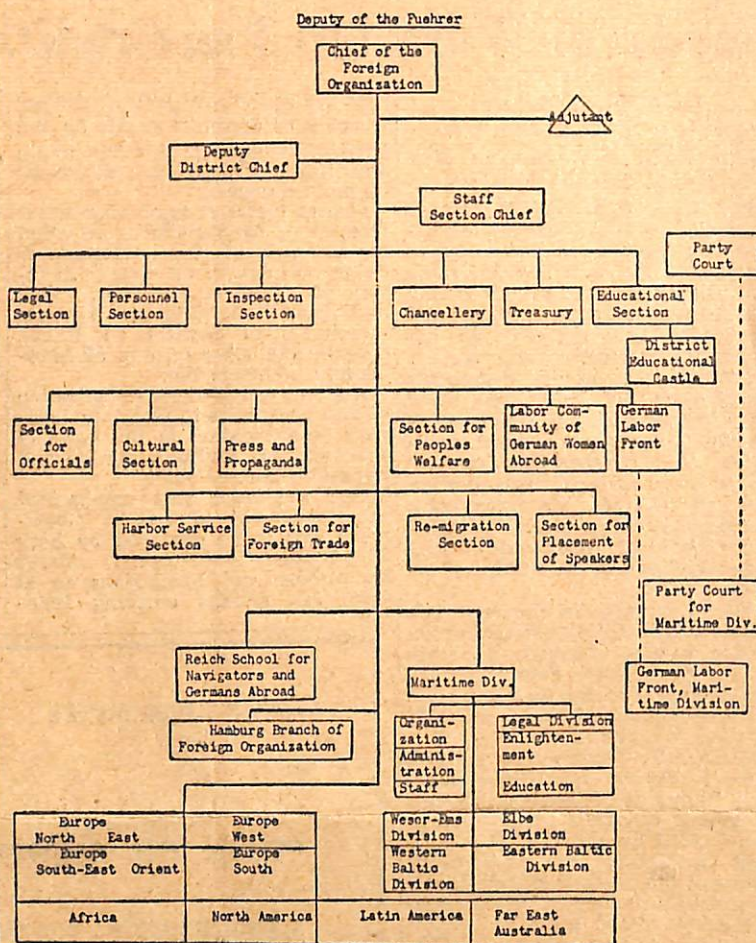


CHART TAKEN FROM GERMAN AGENT—This is the mimeographed translation of a chart for the organization of Nazi propaganda networks in the United States, disclosed yesterday by Attorney General Francis Biddle. The original was taken by FBI operatives from a German agent. The chart is from an organization manual of the National Socialist German Workers' Party